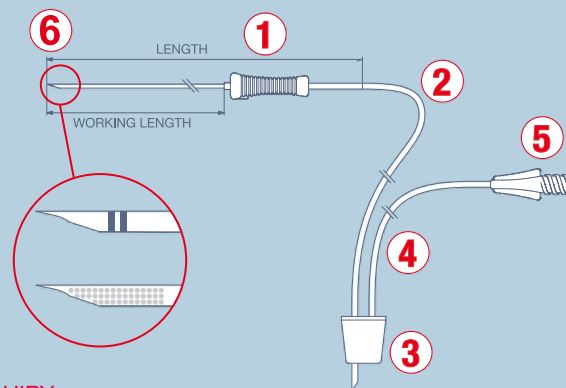


# SUPERIOR FAS SET

CONFIGURE YOUR OWN CUSTOM-MADE SUPERIOR FAS SET IN 6 STEPS

COPY OR DOWNLOAD AT [WWW.GYNETICS.BE](http://WWW.GYNETICS.BE), COMPLETE AND RETURN FOR INQUIRY



## STEP 1 CHOOSE YOUR NEEDLE

TICK BOX

Gauge	OD/ID (mm)	OD/ID (inch)	Length (mm)	Length (inch)	Control	
16G	1.6/1.3	0.063/0.051	400	15.75	Medium	<input type="checkbox"/>
16G	1.6/1.3	0.063/0.051	340	13.39	Medium	<input type="checkbox"/>
16G	1.6/1.1	0.063/0.043	400	15.75	Super rigid	<input type="checkbox"/>
17G	1.4/1.2	0.055/0.047	400	15.75	Flexible	<input type="checkbox"/>
17G	1.4/1.2	0.055/0.047	340	13.39	Flexible	<input type="checkbox"/>
17G	1.4/1.0	0.055/0.039	400	15.75	Rigid	<input type="checkbox"/>
17G	1.4/1.0	0.055/0.039	330	12.99	Rigid	<input type="checkbox"/>
17G	1.5/0.9	0.059/0.035	350	13.78	Super rigid	<input type="checkbox"/>
17G	1.5/0.9	0.059/0.035	400	15.75	Super rigid	<input type="checkbox"/>
19G	1.0/0.65	0.039/0.026	330	12.99	Medium	<input type="checkbox"/>
20G	0.9/0.65	0.035/0.026	370	14.57	Medium	<input type="checkbox"/>

The working length of each needle is the length minus 50 mm/1.968 inch

## STEP 2 CHOOSE YOUR TUBING FROM NEEDLE TO CORK

Type	Length needed	Remarks	
Regular Tubing	_____ cm/inch	n/a	<input type="checkbox"/>
Soft Tubing	_____ cm/inch	n/a	<input type="checkbox"/>
Thick Wall Tubing	_____ cm/inch	max. 120 cm/47.2 inch	<input type="checkbox"/>
Female Luer Connector at end of needle			<input type="checkbox"/>

## STEP 3 SILICON CORK

Type	Size (mm)	Size (inch)	
Small Cork	14 x 18 x 20	0.55 x 0.71 x 0.79	<input type="checkbox"/>
Medium Cork	21 x 27 x 30	0.83 x 1.06 x 1.18	<input type="checkbox"/>

## STEP 4 CHOOSE YOUR TUBING FROM CORK TO PUMP

Type	Length needed	Remarks	
Regular Tubing	_____ cm/inch	n/a	<input type="checkbox"/>
Soft Tubing	_____ cm/inch	n/a	<input type="checkbox"/>
Thick Wall Tubing	_____ cm/inch	max. 120 cm/47.2 inch	<input type="checkbox"/>

## STEP 5 CHOOSE YOUR CONNECTION TO THE PUMP

Female Luer Connector (standard)	<input type="checkbox"/>
Male Luer Connector	<input type="checkbox"/>
No Connector	<input type="checkbox"/>

## STEP 6 CHOOSE YOUR VARIATION OF THE TIP

Back Cut Bevel	<input type="checkbox"/>	<input type="checkbox"/>
Lancet Bevel	<input type="checkbox"/>	<input type="checkbox"/>
	Dual Laser Marking	Embossed Marking